

PLASTIC CABLE DUCT

MAX-2N & MAX-3N



PROTECTING YOUR CABLES

In all kinds of sectors, both in the Netherlands and abroad, critical systems depend on cables and conduits that run through or over the ground. In order to guarantee reliability and availability, it is important to protect these cables and conduits as best as possible against external influences.

Heatpoint supplies a plastic cable duct system as a solution for optimal protection of these cables and conduits. This innovative system consists of a wide variety of parts and accessories. These offer the flexibility to find a suitable solution in all circumstances. The system has been developed to function in the most demanding environment (such as in rail infrastructure).

IMPORTANT FEATURES

- + Lightweight and easy to handle
- + Very solid dovetail connection
- + Robust and vandal resistant locking system
- + Sturdy lid with anti-slip surface
- + 100% Dutch product
- + Available in light grey and black

The plastic cable duct system is widely applicable in several sectors.



Rail



Energy



Industry

The lid has several vertical, narrow guiding ribs to simplify mounting.



The click system in the dovetail prevents ducts from sliding apart (e.g. in case of subsidence).



The lid is provided with an edge (overlap) over the adjacent duct to prevent dirt and rodents from entering, to provide air ventilation and to accommodate expansion and shrinkage.



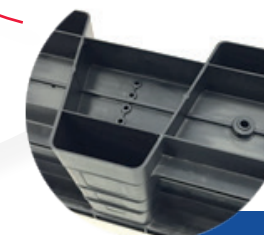
Lid marking for the opening direction of the lid (special hand tools are required).



Sturdy dovetail connection to connect the cable ducts together without the use of additional fasteners.

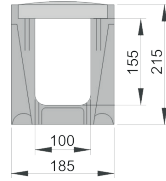
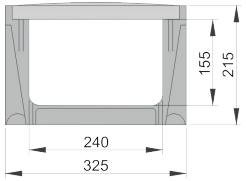


Thanks to the strong bottom structure and partly double duct walls, the duct is very stable and resistant to lateral soil loads.

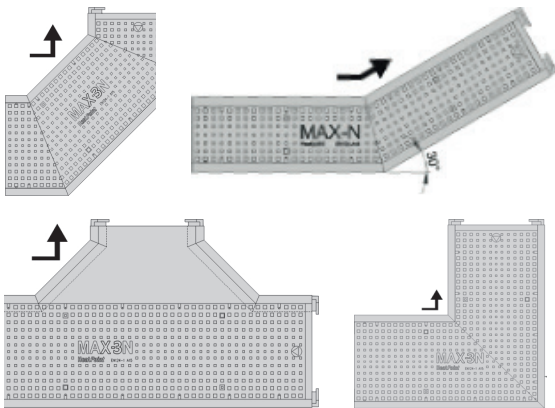




SPECIFICATIONS

	MAX-2N	MAX-3N
		
Internal dimensions (LxWxH) mm	1000x100x155	1000x240x155
External dimensions (LxWxH) mm	1000x185x215	1000x325x215
Weight of duct and lid (set)	3,6 kg	5,1 kg
Material	Polypropylene PP	
Colour	Light grey (Lid & Duct) Other colours available on request	
Anti-slip surface lid	In accordance with norm EN124-1:2015	
Fire retardant	Self-extinguishing according to UL94V2	
Thermal properties	Between -20°C and +80°C while maintaining the mechanical properties	

ATTACHMENT AND ACCESSORIES



There are many possibilities regarding the implementation of the attachments.

